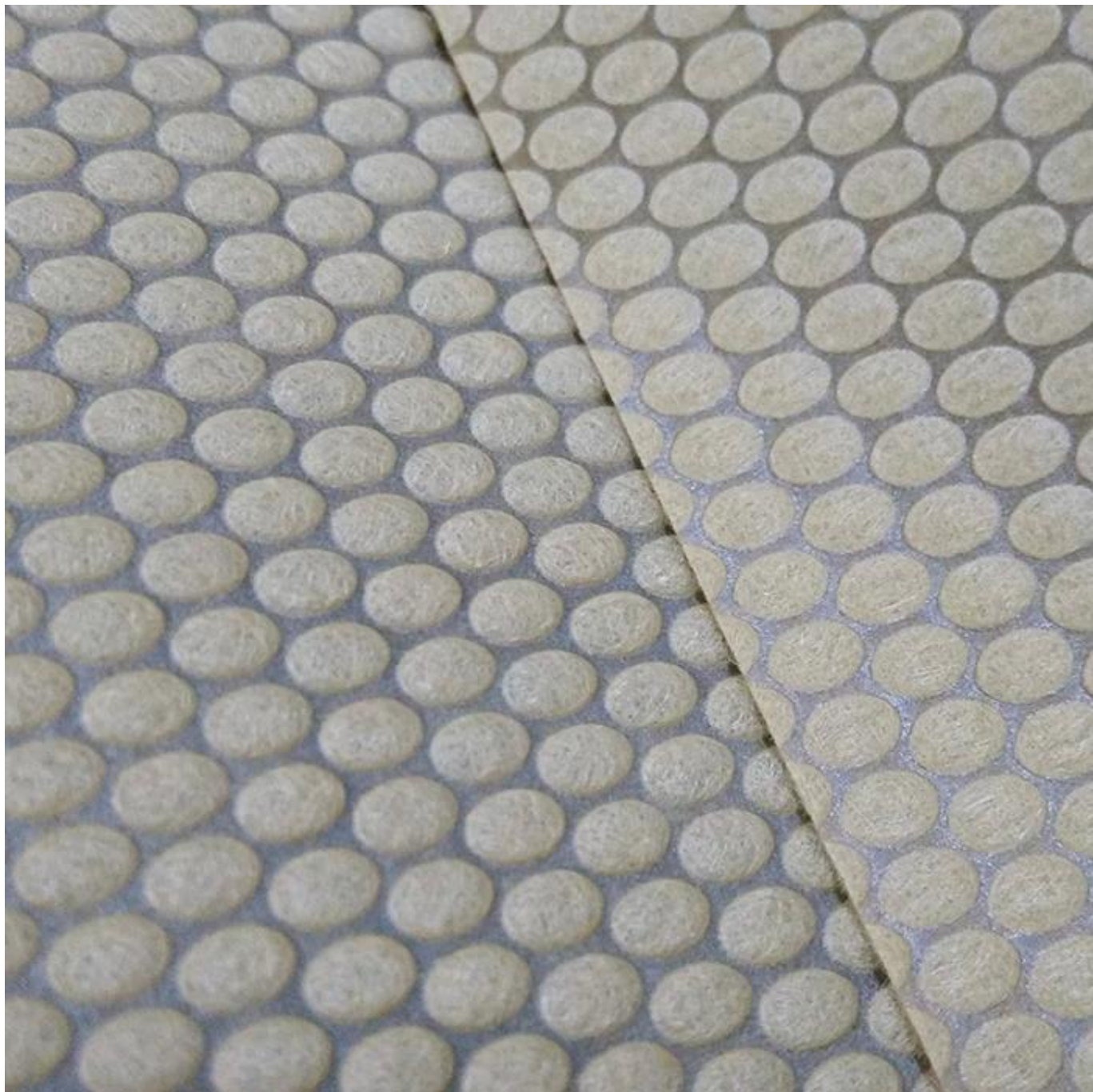


PP

| | |
|----|--|
| PP | 100PP |
| PP | PP |
| PP | PP |
| PP | PP |
| PP | PP |
| PP | PP |
| PP | 1.6PP1.8PP2.0PP2.4PP3.2PP |
| PP | 100PP PP PP PP |
| PP | aPP 1040gsm bPP17-100gsm3UV cPP50100gsm dPP 50~120gsm ePP100150gsm |

PP

PP







□□□□□□□ PP□□□□□□□□□□□□□□□□□□□□

□□□□□□□□



PP



Production Line



Product Packaging



Loading

PP

JUNQIAN 58500 - GUIDE
2005
1.6M 1.9M 2.1M 2.5M 3.2M

PP

SGS、MSDS、BUREAU VERITAS、CE、Nemko
 TüvRheinland、ATC、CTI
 认证
 认证
 认证 " " 认证
 认证



Office Building



Warehouse Stock



Production Equipment



Foreign Trade Department

PP 认证 FAQ

| | |
|--------|------|
| Q1 | A1 |
| Q2 MOQ | A2 1 |
| Q3 | A3 |

| | |
|----|----|
| Q4 | A4 |
| Q5 | A5 |
| Q6 | A6 |
| Q7 | A7 |
| Q8 | A8 |