


## Product Description of CSPCD 55 100% Rayon Pearl Dot Flushable Non woven Fabric

|                  |   |
|------------------|---|
| Item             | CSPCD 55 100% Rayon Pearl Dot Flushable Non woven Fabric  |
| Raw Material     | 100% rayon  |
| Nonwoven Technic | spunlaced   |
| Grade            | A grade   |
| Dotted Design    | Pearl dot   |
| Colors           | White or as request are available   |
| Standard Width   | 3.2m, could be cut into small width   |
| Weight           | 55gsm,or as request are available(40-200gsm)  |
| Feature          | Through engraving it improves the fabric feel and presentation of the product;it also improves the product's flushability. It is an unique flushable product. |
| Applications     | baby training wipes, toilet paper, hygiene and medical wipes  |

## Product Show of CSPCD 55 100% Rayon Pearl Dot Flushable Non woven Fabric

A close-up photograph of a nonwoven fabric. The fabric has a light-colored, textured surface with a repeating pattern of small, interconnected circles or hexagons. A white, smooth strip is visible in the upper right corner, partially overlapping the patterned fabric. Two website URLs are overlaid on the image in a light gray font.

[www.nonwovenproductsulipper.com](http://www.nonwovenproductsulipper.com)

[www.guidenonwoven.com](http://www.guidenonwoven.com)



[www.nonwovenproductsulipper.com](http://www.nonwovenproductsulipper.com)

[www.guidenonwoven.com](http://www.guidenonwoven.com)



[www.nonwovenproductsulipper.com](http://www.nonwovenproductsulipper.com)

[www.guidenonwoven.com](http://www.guidenonwoven.com)

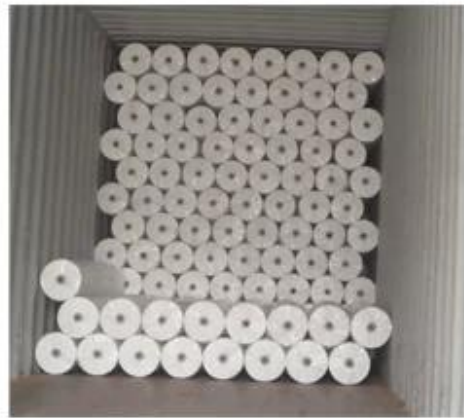
Product Packaging and Shipping of CSPCD 55 100% Rayon Pearl Dot Flushable  
Non woven Fabric



Packed in rolls,  
with 2 " or 3 "  
core inside,  
strong poly  
bags outside



transporting the goods  
to the port



loaded in container



## FAQ of CSPCD 55 100% Rayon Pearl Dot Flushable Non woven Fabric

| Question   | Answer  |
|--|---|
| Q1: Do you have it in stock ?  | A1: Yes,we have.  |
| Q2: What is your MOQ ?   | A2: In-stock:1roll;customized:1ton  |
| Q3: How can I get the sample ?   | A3: If you need sample to test, we can make it as per your request. But we need to charge sample fees. If it is our regular product in stock, you just pay freight cost and sample is free. |
| Q4: What is your package detail ?  | A4: individually packed for each pcs,or customer's requirements   |
| Q5: What should I do if I cannot find what I looking for on your website ? | A5: Please feel free to contact us by email and send detailed information for the product you look for.We will check whether it is available.   |

|   |   |
|---|---|
| Q6: What about lead time for mass production ?          | A6: Honestly, it depends on the order quantity and the season you place order. Generally speaking, the lead time is about 2-4 weeks. So we suggest that you start inquiry as earlier as possible.                 |
| Q7: Is it all right to make customer's own brand name ? | A7: Sure. We warmly welcome the OEM clients. We can discuss the package, design, etc.   |
| Q8: When can I get the price ?                          | A8: Usually we quote within 24 hours after we get your inquiry detail. If you are very urgent to get the price, please call us or tell us in your email so that we will quote your the price as soon as possible. |