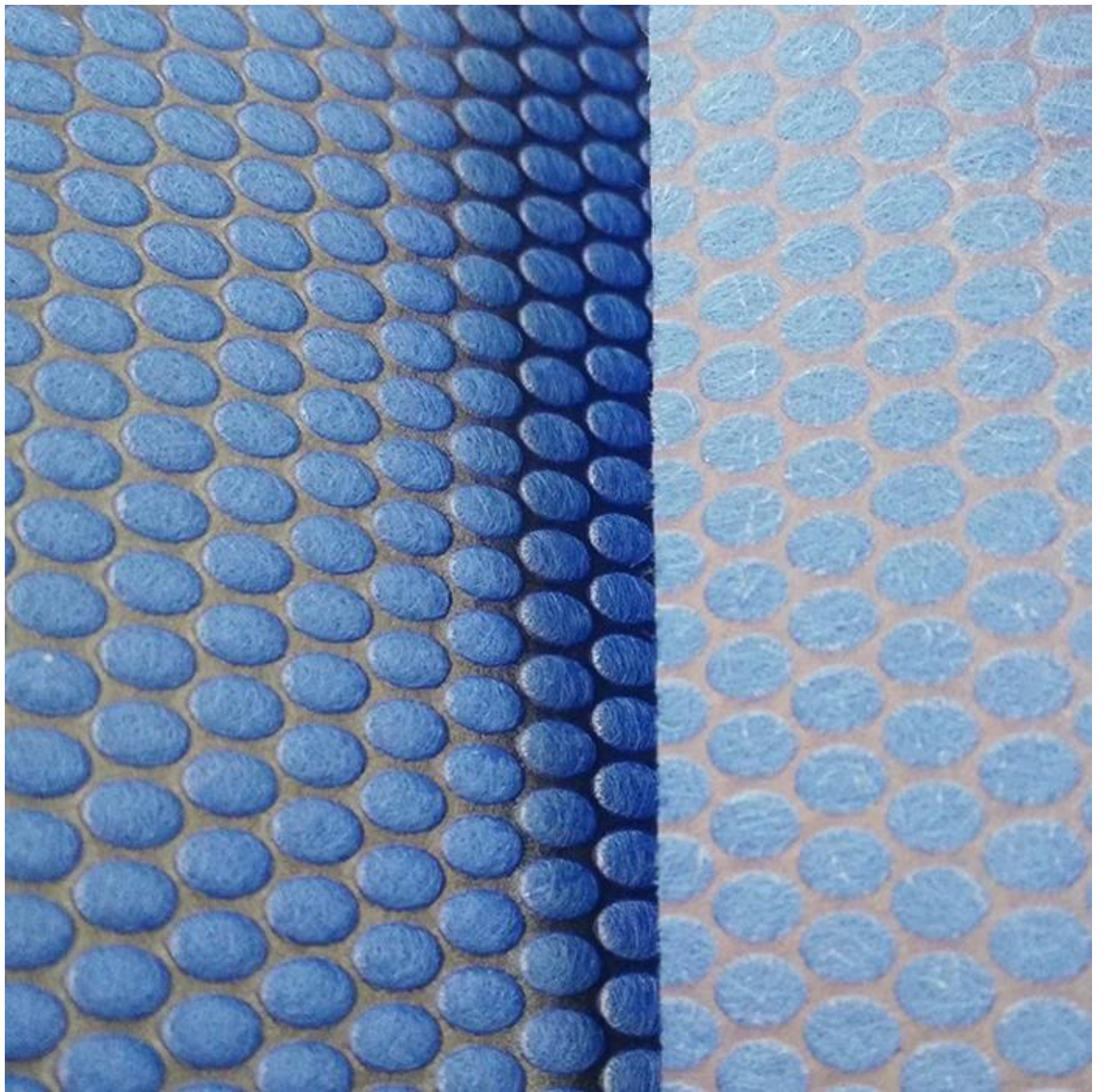


100PP

| | |
|----|----------------------------------------------------------------------------------------------------------|
| PP | 100PP |
| PP | PP |
| PP | PP |
| PP | PP |
| PP | PP |
| PP | PP |
| PP | 1.6m, 1.8m, 2.0m, 2.4m, 3.2m |
| PP | <ul style="list-style-type: none"> 100 elongation |
| PP | <p>a) 10~40gsm</p> <p>b) 17-100gsm, 3UV</p> <p>c) 50~100gsm</p> <p>d) 50~120gsm</p> <p>e) 100~150gsm</p> |

100PP

PP







□□ □□□□□□□□□□100□PP□□□□□

□□□□□□□





Production Line



Product Packaging



Loading

100PP

JUNQIAN
 58500 - GUIDE
 2005
 1.6M 1.9M 2.1M 2.5M 3.2M
 PP

PP
 100PP
 PP
 PP

SGS MSDS BUREAU VERITAS CE Nemko
 TÜVRheinland ATC CTI
 “ ”
 “ ”
 ”



Office Building



Warehouse Stock



Production Equipment



Foreign Trade Department

100 PP

| | |
|----|----|
| Q1 | A1 |
| Q2 | A2 |
| Q3 | A3 |

| | |
|----|----|
| Q4 | A4 |
| Q5 | A5 |
| Q6 | A6 |
| Q7 | A7 |
| Q8 | A8 |